

ARDEC  
G R O U P

*Contemporary Handwashing 2024*

Welcome to ArdecGroup

**“WASHROOMS ARE  
THE MOST USED  
AND LEAST  
CONSIDERED  
SPACES.  
WHERE CHANGING  
THAT.”**

We are a leading supplier of contemporary and long-lasting handwashing solutions, that enable our clients to facilitate the design of superior washroom spaces.





# ***SINKS + BASINS***

Ardec Group's sinks are fabricated from solid surface material and distributed from our Ontario and BC facilities to our many valued clients country wide. We take pride in providing quick turnaround times and complete service and support from the design stage until final installation.

Unlike stone-based material, acrylic solid surface can be formed and customized to any shape or size easily. The material is also non-porous and seamless, preventing staining and water damage without the need for sealing and is easily maintained and repaired if need be.

## **Finishes**

We work with all solid surface brands including Corian, Meganite, Formica, Krion, Hanex, and Hi-Macs. These brands combine to allow us to offer our sinks in over 500 unique finishes.



SINKS+BASINS

# MONOLITH BASIN

The Monolith Basin system is an infinitely configurable hand-washing sink solution, with versatility to fit well into any washroom space. The basin is a contemporary design solution that captures the quality of old-world craftsmanship, with a design that is effortlessly minimal and yet hard-wearing.

This ADA-compliant sink is manufactured with a slot drain to provide easy cleaning and eliminate bacteria build-up. All units are shipped with easy-to-install, fully adjustable brackets that secure the sink to the wall and only require wood blocking for support.

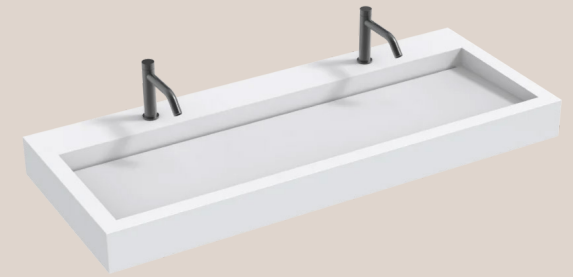


Full customization of height, width, and length of sizing makes this an easy piece to specify. For standard washrooms, simply start with the A, B, C, or D series as a base and then choose the length, depth, and number of users that you want.

In washrooms where you have more design scope, further customization such as adding extra counter space, a baby change table, or a bin chute can be added to give your sink a unique touch.



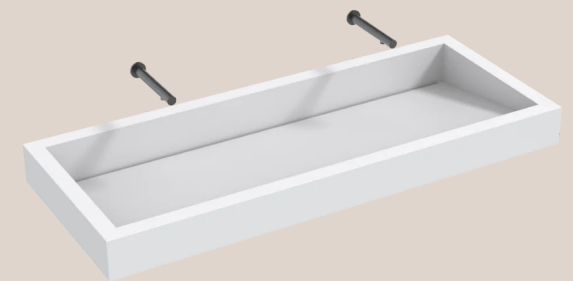
**Monolith A Series**



**Monolith B Series**



**Monolith C Series**



**Monolith D Series**





SINKS+BASINS

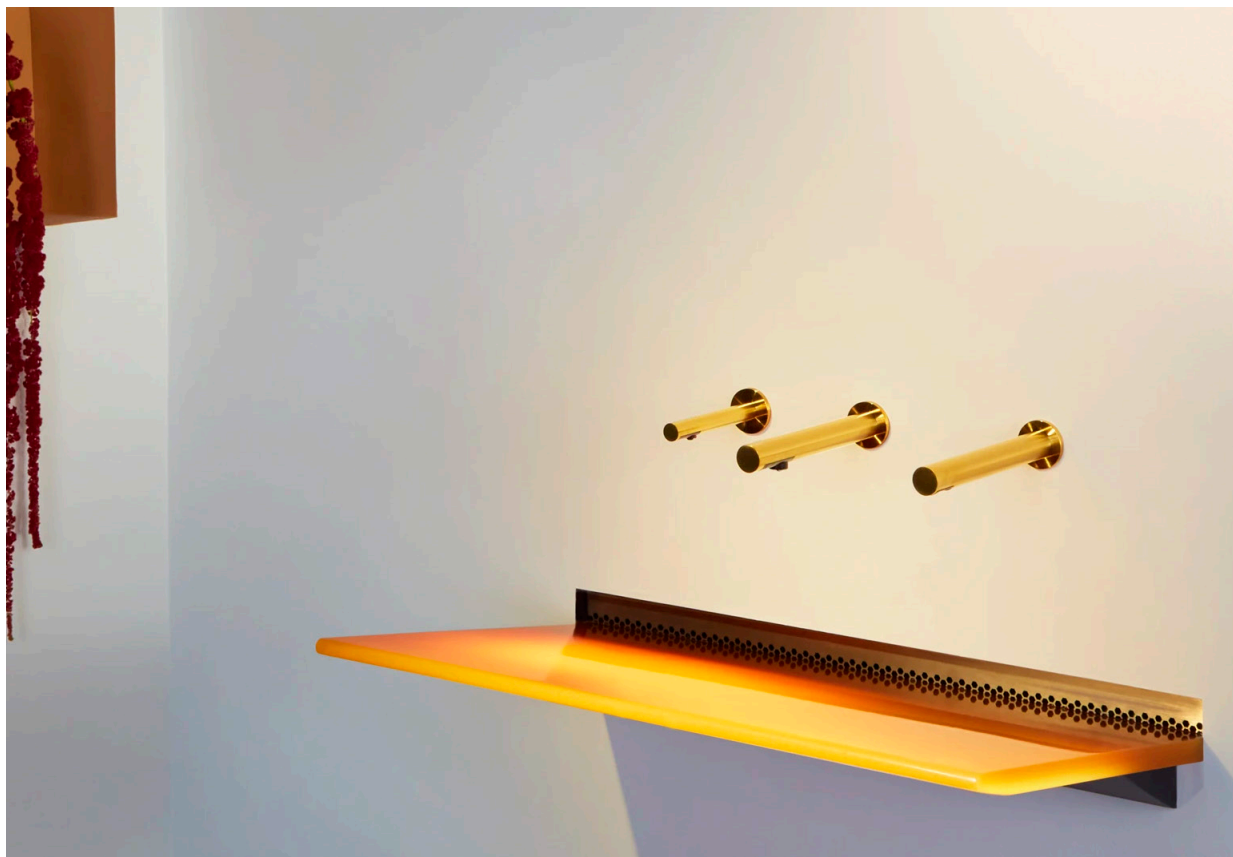
# AEROFOIL

*The Aerofoil is a hand-washing concept that challenges conventional ideas of what a sink can be. This sink is a minimalistic, floating basin crafted from a single slab of solid surface and supported by a hidden framework.*

*It enables designers to specify a striking washroom design feature and its availability of up to four users, ensures a fit in a range of washroom sizes and types.*

*The unique design creates a clean wall unencumbered by pipes or electronics and still meets all barrier-free requirements nationwide.*

*The basin has been rigorously tested for water containment and drainage efficacy and uses its angled wash plane to intersect water flow for minimized splashing.*





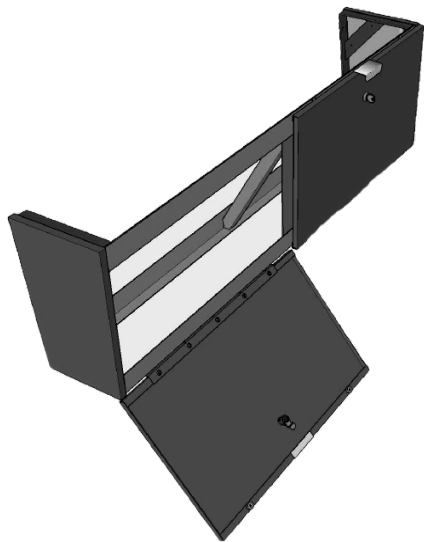


# ***VIRONNE AET SINK***

Vironne's AET Sinks are a unique and robust trough basin, specially designed to withstand tough, high-traffic environments such as schools, universities, and other institutional washrooms. Distributed exclusively by Ardec Group, both the AET sink and its integrated removable pipeskirt are made from solid surface material and are therefore fully customizable in length, number of users, and finish.

ADA and CSA compliance, combined with its slim design and compatibility with both wall and deck-mounted faucets, make this product an easy fit into the specification. Furthermore, seamless installation and easy-to-clean, thermoformed corners that eliminate bacteria buildup, make this easy to use for contractors and maintenance personnel alike.

# ***VIRONNE PIPESKIRT***



Vironne Pipeskirts provide a sleek, robust cover for all plumbing and electrical components underneath the sink and are designed to be both unobtrusive and aesthetically pleasing, all while meeting ADA requirements.

Fully customizable and available in any size, they are designed to work with our Monolith Basins, but can also be used with a range of other vanity designs. These steel frame pipeskirts also double as access panels and can be constructed from stainless steel or solid surface material allowing for a broad range of colors.







SINKS+BASINS

## ***VIRONNE INSPIRE***

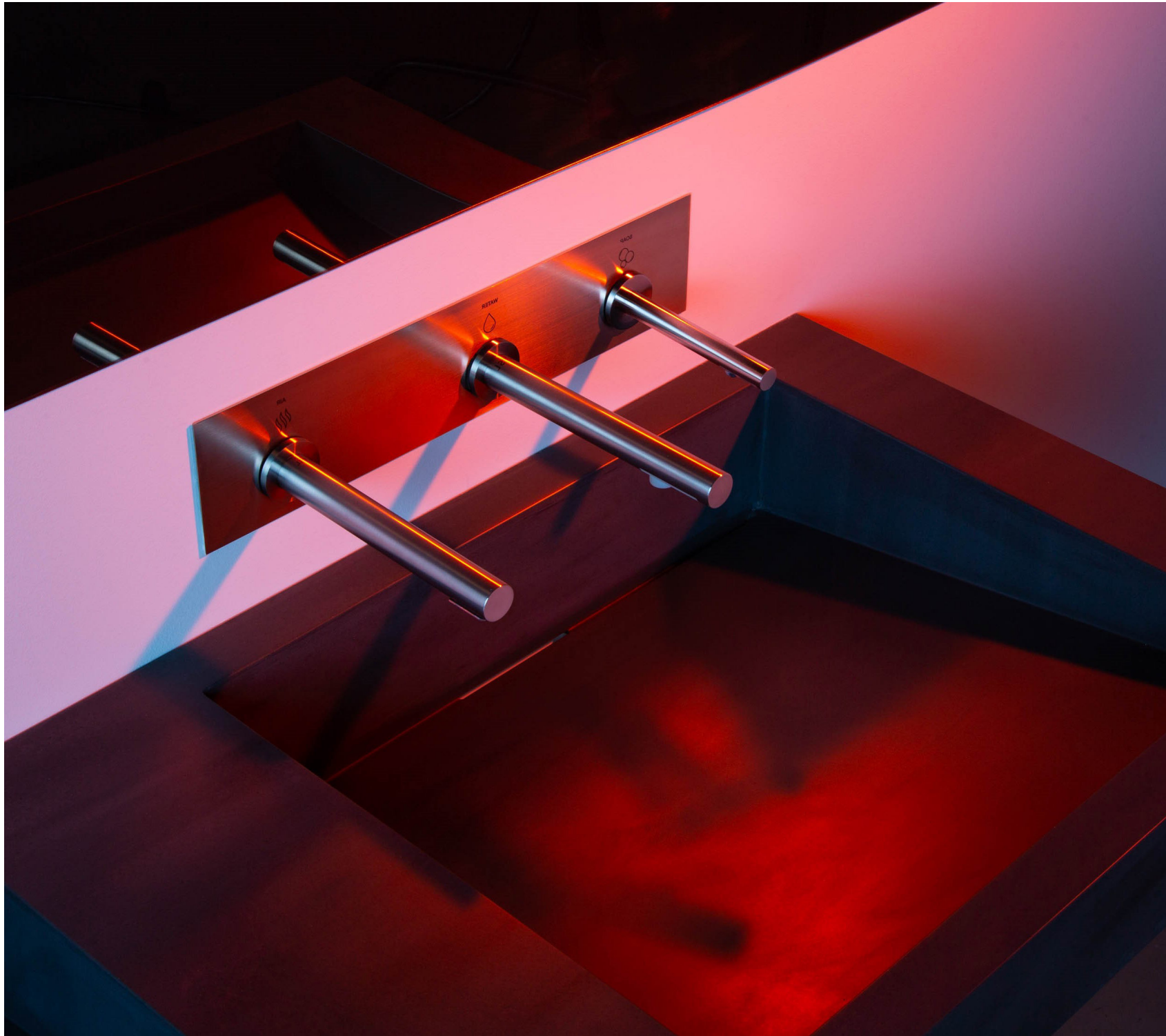
Vironne Inspire is a process in which designers have a free hand in the washroom space, enabling them to bring their innovative ideas to creation and push the boundaries of what a sink can be. With our experienced team and fully equipped facilities, we are uniquely qualified to be trusted advisers and washroom consultants in designing, fabricating, and installing nearly any shape out of solid surface.

Since its introduction solid surface has proven itself to be remarkably durable, a versatile material that is easy to live with in a variety of areas. Designers can confidently create environments that are sustainable and relate to the health and well-being of its users.





# SOAPS + FAUCETS

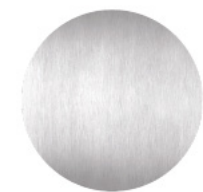


Our range of faucets and soap dispensers, deck and wall-mounted, are thoughtfully designed to ensure they have the best look and feel. Distributed exclusively in Canada by us, our collections work for a range of design types, from revolutionary to classic.

All designed to be as functional as they are beautiful, they are made to last for years in high-frequency washrooms; whether in primary schools, corporate headquarters, government buildings, recreation centers, or any other public spaces.



Polished Stainless



Brushed Stainless



Black PVD



Copper PVD



Brass PVD

SOAPS + FAUCETS

# RIBBON COLLECTION

An award-winning trio of touch-free fixtures that offers a modern, intuitive solution to the flow of the restroom experience. Specified individually although they work best as a team, the Ribbon soap, water, and air fixtures can be arranged however best directs the flow of traffic, according to the needs of any space.



## DESIGN

Designed by TSL in unison with renowned designer Sebastien Conran, these fixtures were made with a timeless appeal. This collection was developed to meet a need for commercial fixtures that were technologically advanced, sustainably minded, and humanistic in their design.

## SPECIFICATION

The arrangement and quantity of fixtures can be adjusted to best fit the washroom environment and combined with the five distinct color options available, they are a boon for designers seeking maximum flexibility. Whether specifying a single fixture or full sets of Ribbon there is a single code available, making for effortless specification.







### **RIBBON HAND DRYER**

A pioneering innovation upon its debut, the deck-mounted fixture is placed over the basin, keeping water runoff in the sink, and off restroom floors where it can be at best unsightly and at worst a safety hazard.

A smooth transition from washing to drying moves users efficiently through the cleansing ritual. The Ribbon Dryer is also the quietest commercially available hand dryer, encouraging a more peaceful restroom ambiance.

### **RIBBON FAUCET**

This programmable faucet can be set to run for 20 seconds, comes with adjustable flow rates and a cascade aerator that issues a gentle, smooth flow of water and keeps splatter to a minimum.

### **RIBBON SOAP DISPENSER**

As part of crafting a hand-washing experience that is both well-considered and precise, this soap dispenser is calibrated to dispense solely foam soap which delivers a comfortable volume into the hand and gives a pleasing, luxurious feel in any environment.

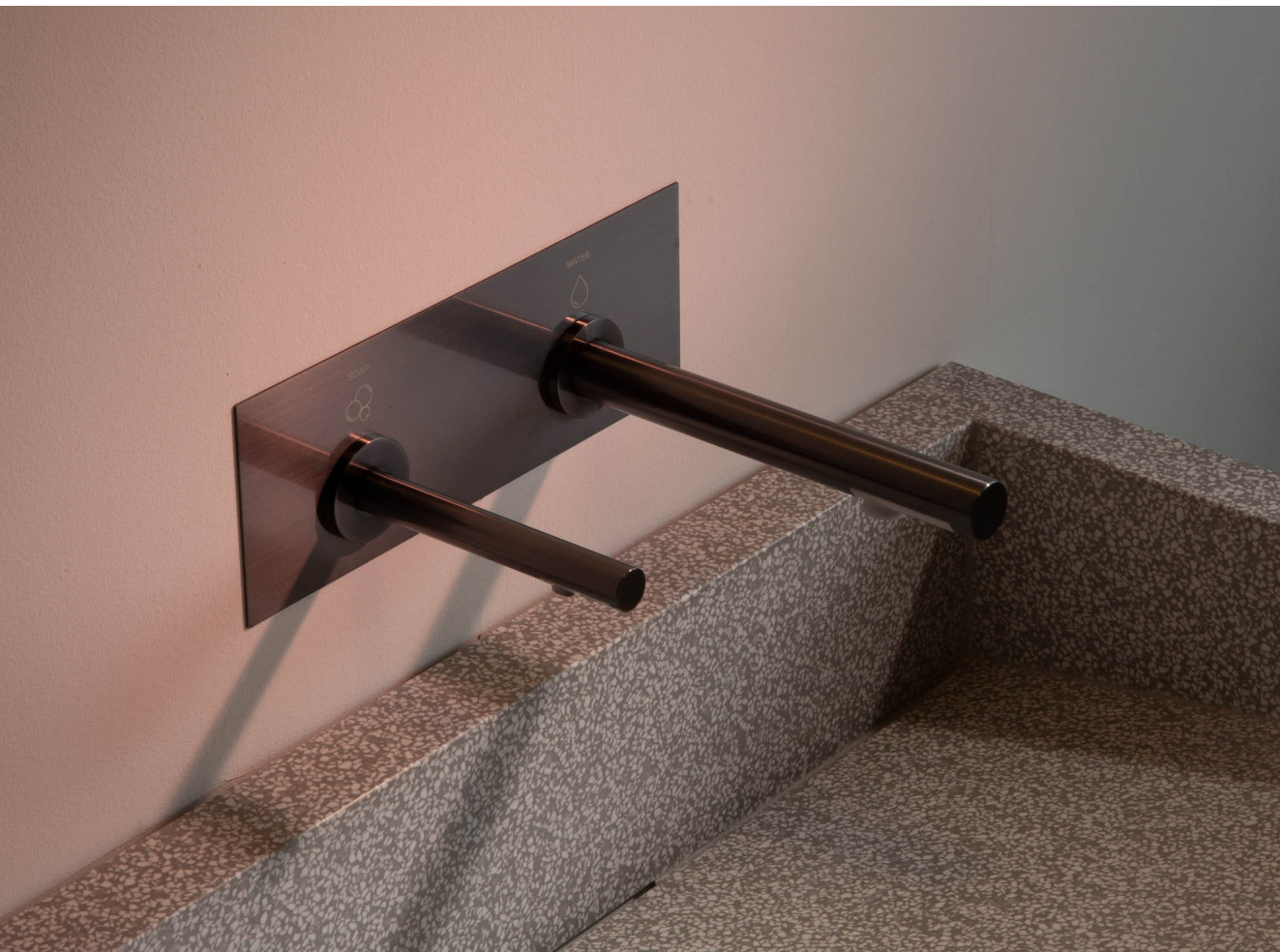


SOAPS + FAUCETS

# THE CHANNEL COLLECTION

Elegant enough for boutique installations and the small spaces they often occupy, and efficient enough for high-traffic restrooms that require uncluttered counter space, The Channel System's simplicity makes it adaptable without sacrificing strength.

The Channel Fixtures were all designed to conform to the Golden Ratio for harmonious proportions, and all three fixtures were shaped to have a pleasingly sleek silhouette that is both durable and delicate.



## CHANNEL DRYER

A remarkably discreet vent produces a gentle but powerful stream of air that directs water off the hands and into the basin in a pleasant and hygienic manner.

## CHANNEL FAUCET

The minimalistic waterspout has a marine-grade stainless steel housing engineered to its barest and most perfect form: an uninterrupted cylinder.

## CHANNEL SOAP

The reliable IR sensor is placed just in front of the nozzle on the underside of the tube and makes triggering each soap deposit a seamless and intuitive gesture for the user.



SOAPS + FAUCETS

# RADIUS WALL MOUNTED FIXTURES

Water efficient, hygienic, and sleek, the Radius wall-mounted series features an elegant, minimalist spout machined from stainless steel. A separate sensor housing is designed to be affixed directly under the spout, incorporating super-stable IR technology for an easily triggered water flow with intuitive movement.

Available in two sizes, these faucets also come with matching wall-mounted soap dispensers. Both dispensers feature a slim immovable spout, with the manual option featuring a robust pump-action mechanism for quick replenishment, and the sensor option combining with the faucet for a completely touch-free handwashing experience.





SOAPS + FAUCETS

# RADIUS DECK MOUNTED FIXTURES

The simplicity of form and clean lines allow the Radius deck-mounted series faucets to work across many design intents. Bauhaus-inspired, the faucets are milled from solid stainless steel and utilize robust Infra-Red technology, offering sensor stability and longevity.

The straight and curved spout combinations in the lineup offer sensible design in unison with quality assurance and a high level of craftsmanship. All the faucets are available in two sizes and can be matched with our manual or sensor-operated soap dispensers for commercial washroom environments that are not just better, but beautiful.





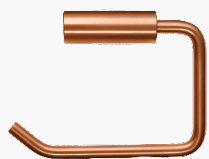
# Washroom Accessories

The washroom fittings we distribute are meticulously designed and crafted to meet your needs and the needs of your client. Each weld, polish, cut, and finish is processed to the highest standard, as we believe attention to detail makes the difference between a washroom and a welcoming environment.

Our understated yet sleek and stylish collection includes a variety of products from grab bars to waster bins, coat hooks to toilet roll holders and so much more. This makes the specification process easier for interior planners, by offering one place for a full line of products for their washroom design.



Waste Bin



Toilet Roll Holder



Toilet Brush Holder



Paper Towel Dispenser



Coat Hook



Recessed PT Dispenser



Toilet Tissue Dispenser



Baby Change Table

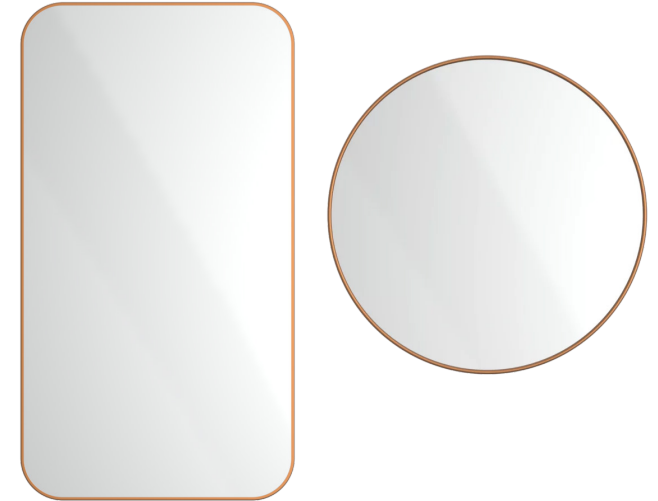


See all: <https://www.ardecgroup.com/accessories>



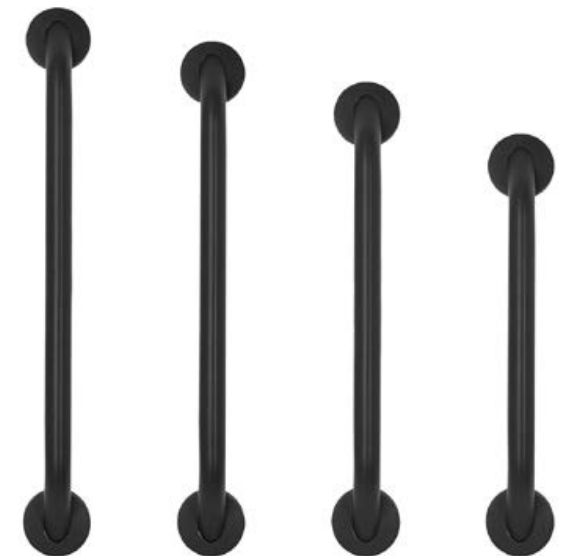
## Mirrors

The wall-mounted mirrors, both the circular and rectangular design, are an elegant addition to any washroom. Easily mounted, they are highlighted by a durable stainless-steel frame that is available in five beautiful finishes, which allows for a versatile aesthetic and a uniform washroom feel when coordinated with the other fixtures.



## Grab bars

The grab bars are a perfect example of contemporary design style in conjunction with dependable functionality. The four contrasting finishes combined with the four available sizes, ensure a great fit for a diverse range of washrooms. Underneath the great design, is a rigorously tested product equipped with a non-slip surface, that is ADA compliant and is covered by a comprehensive warranty.





# Dryers



A discreet and elegant high-speed hand dryer makes a big impact on users and a small impact on the environment. With a 15-second dry time, and a lightweight and space-saving design, the TSL.3001 is a sustainable and aesthetically refined addition to public and commercial washrooms.



The L-M9 is a modular, recessed unit with a 100mm depth that fits comfortably into a standard partition wall. This high-speed dryer has a 17-second drying time and comes with a concealed locking system, that keeps the lock out of sight.

*More often than not, quality design stops before it gets to the most necessary space in any building. We believe that washrooms can be a beautiful extension of the interior design with the use of the right materials, finishes, and fixtures.*

*We've worked with many architecture and design firms, big and small to have our products specified in a range of different projects. Join us in our continuing journey to make the world a better place, one washroom at a time.*







Scan for More

## **Contact Us**

**Email: [info@ardecgroup.com](mailto:info@ardecgroup.com)**

**Phone: 905.648.3809**

**Website: [www.ardecgroup.com](http://www.ardecgroup.com)**

**Head Office: 1433 Sandhill Dr,  
Ancaster, ON L9G 4V5, Canada**